

**Topaz Systems, Inc.
SigLite BT (Bluetooth 1X5) Pairing Guide**

Topaz Systems, Inc.
650 Cochran Street, Unit 6
Simi Valley, CA, 93065

www.topazsystems.com
tech support: 805 520-8286
support@topazsystems.com

©1995-2006, all rights reserved, US patent 6,307,955, and pending

Below are the instructions for SigLite BT (Bluetooth 1X5) pairing.

1. Be sure that you have Bluetooth support on your PC
2. Turn on the pad.
3. Open "My Bluetooth Places" on the PC
4. Open "Find Bluetooth Devices." The screen should look like this:



**Entire Bluetooth
Neighborhood**



TOPAZ15

This folder displays the Bluetooth devices in the neighborhood.

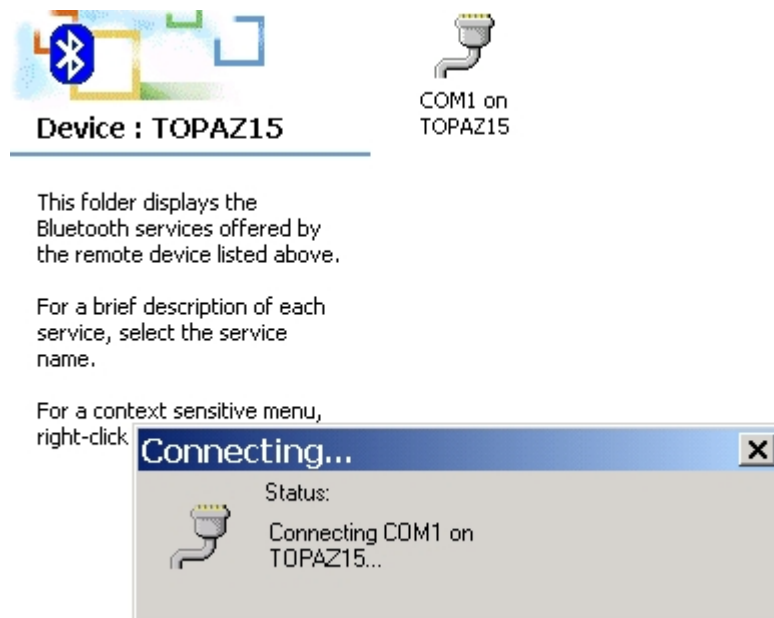
To find other devices in the area or to refresh the list of devices, [click here](#).

To cancel the search for devices, press ESC.

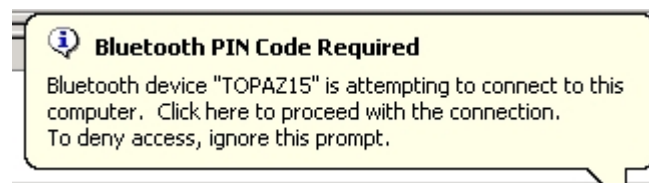
5. Open the TOPAZ15 Icon, and the screen should look like this:



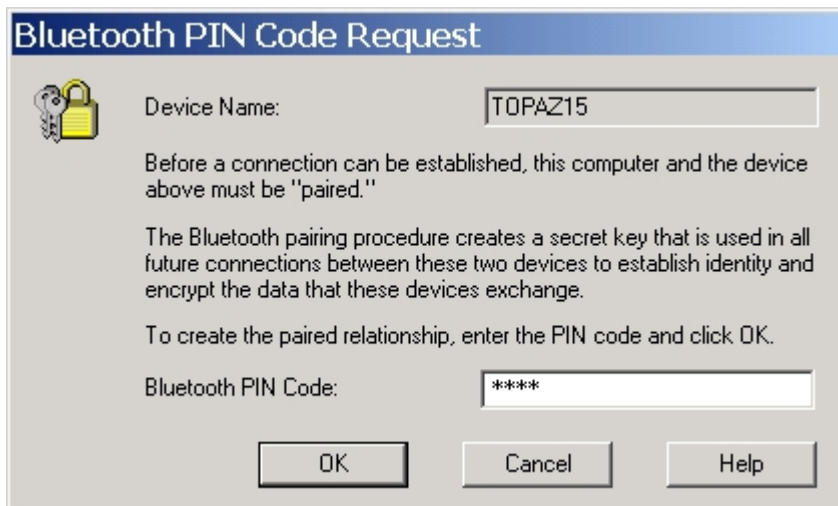
6. Open COM1 on TOPAZ15, and the screen should look like this:



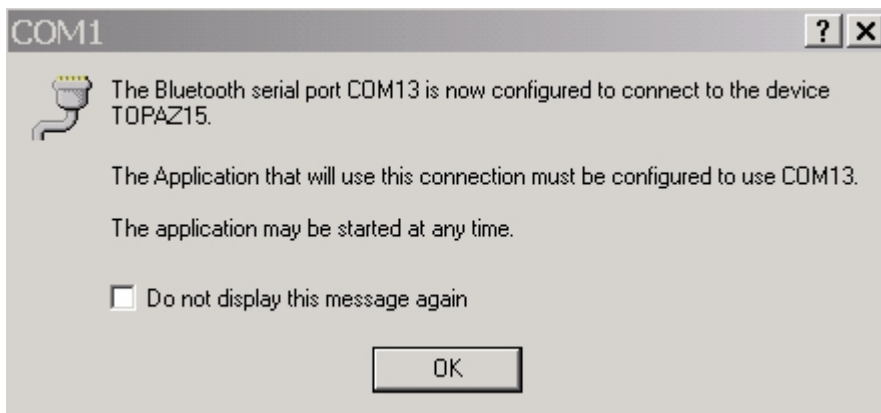
7. Select this icon to pair the devices:



8. You will get this screen. enter 0000 as the PIN code:



9. You will then get this message telling you of the assigned com port number.



10. The TOPAZ15 Icon will then turn green, indicating that all is well.



This folder displays the Bluetooth services offered by the remote device listed above.

For a brief description of each service, select the service name.

For a context sensitive menu, right-click a service name.

For more information regarding products and support
Email: support@topazsystems.com
Phone: (805) 520-8286

www.topazsystems.com
650 Cochran Street, Unit 6, Simi Valley, CA, USA, 93065
Phone: 805 520-8282; Fax: 805 520-0867